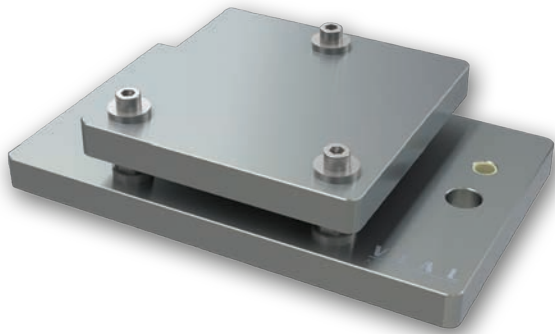


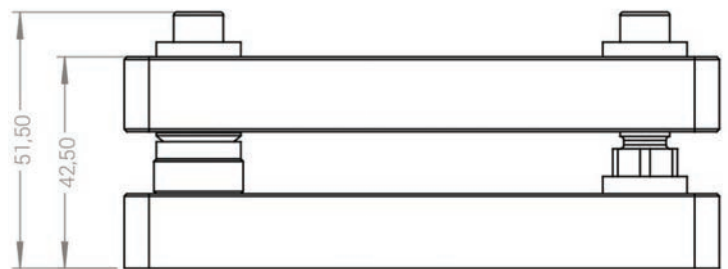
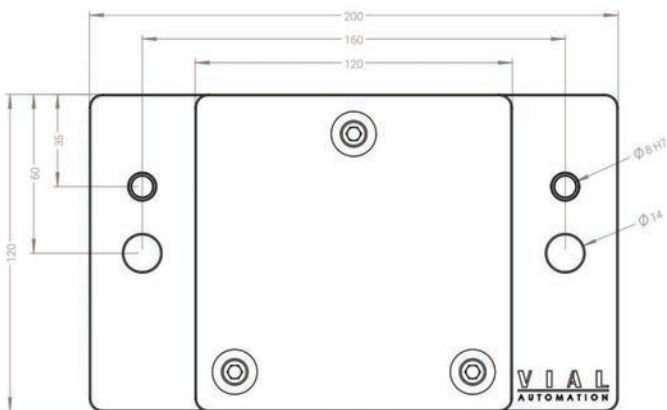
Tehnični list 2120-0.0-000-000




Miza za nastavitev paralelnosti - tip 2120

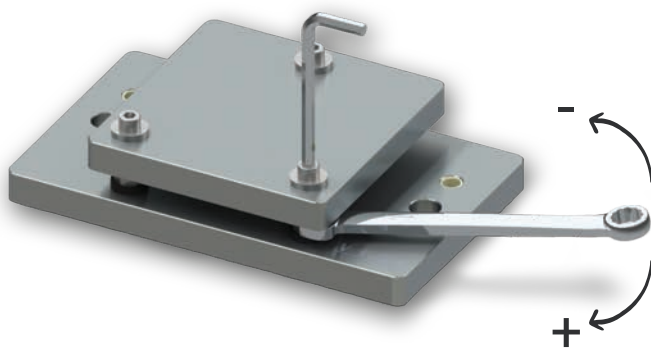
Tehnične informacije:

- Pritrditev ležišča 120x120 mm
- Pozicioniranje mizice z dvema zatičema $\varnothing 8$ mm
- Luknja za vijake $\varnothing 14$ mm (M6-M10)
- Maksimalna sila obremenitve 5'000 N



 Potrebno orodje za nastavitev paralelnosti mize

Odviti / priviti



Imbus ključ 5 mm

Viličasti ključ 13 mm