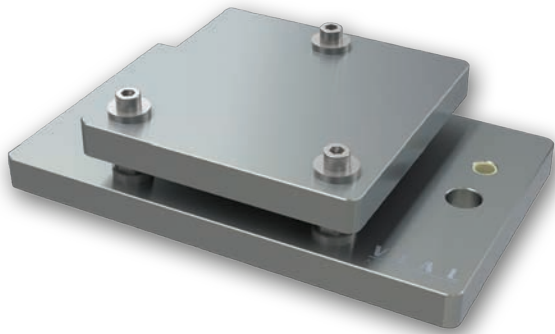


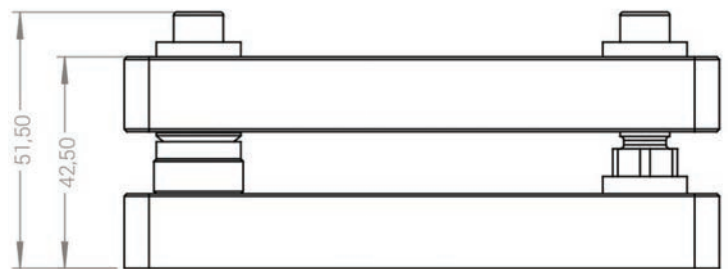
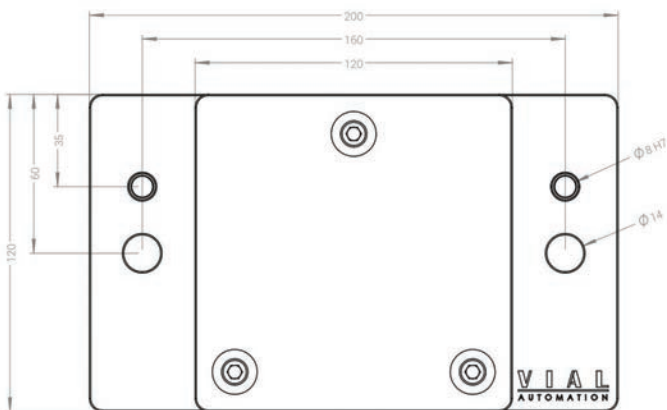
Product sheet 2120-0.0-000-000




Levelling table – Type 2120

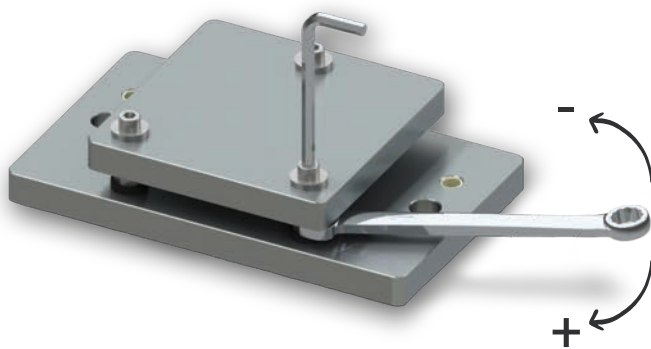
Technical information:

- Mounting plate 120x120 mm
- Positioning with two pins $\varnothing 8$ mm
- Drill hole $\varnothing 14$ mm (M6-M10)
- Maximum vertical load force 5'000 N



 Necessary tools for setting the Levelling table

Unscrew / screw



Allen key 5 mm

Combination spanner 13 mm