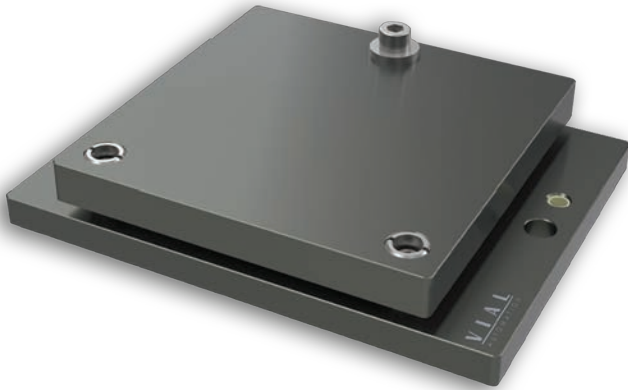


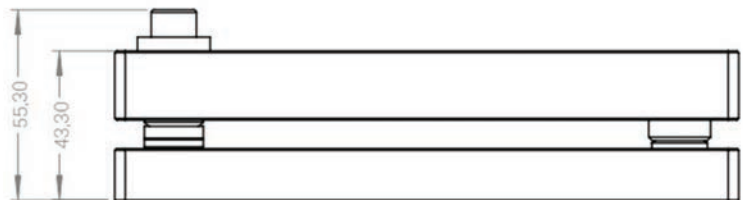
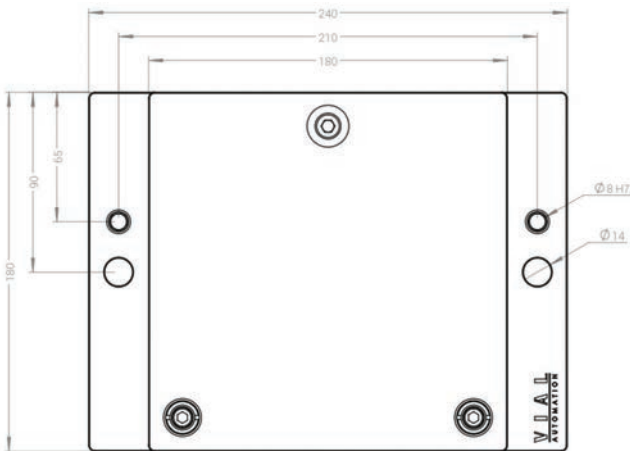
Tehnični list 2180-0.0-000-000




Miza za nastavitev paralelnosti – Heavy Duty 2180

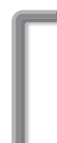
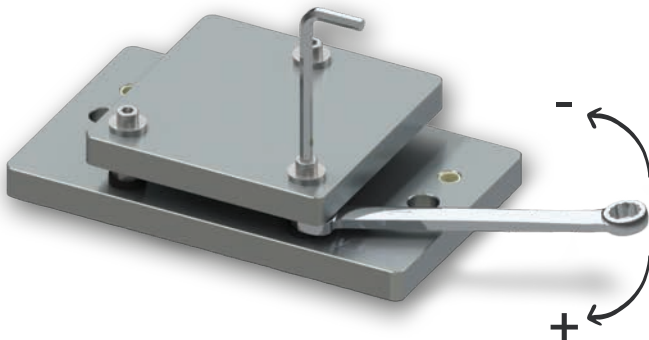
Tehnične informacije:

- Pritrditev ležišča 180x180 mm
- Pozicioniranje mizice z dvema zatičema $\varnothing 8$ mm
- Luknja za vijake $\varnothing 14$ mm (M6-M10)
- Maksimalna sila obremenitve 8'000 N
- Primerna za:
 - TSP/USV750
 - BK 40/60



 Potrebno orodje za nastavitev paralelnosti mize

Odviti / priviti



Imbus ključ 5 mm



Viličasti ključ 13 mm