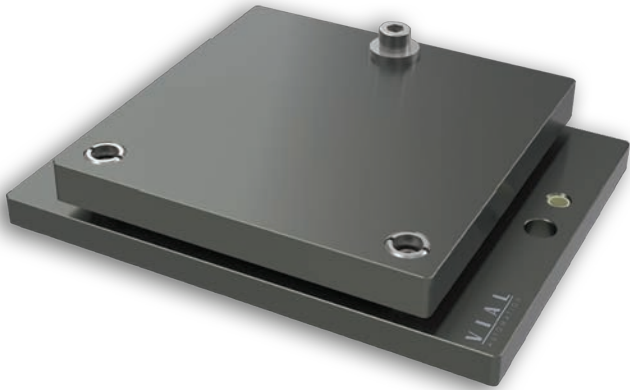


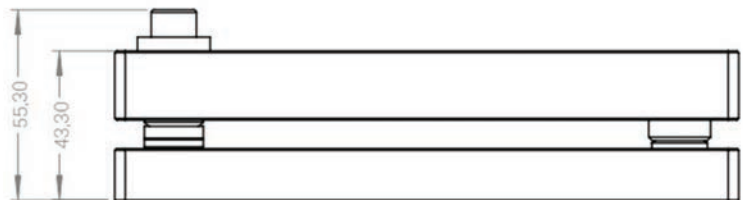
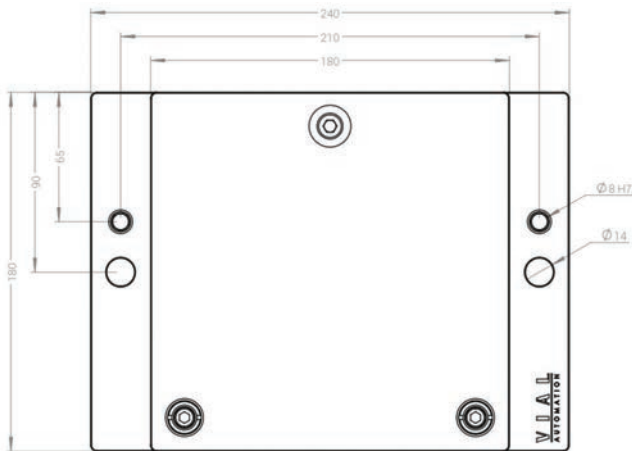
Produktblatt 2180-0.0-000-000




Parallelitätstisch – Heavy Duty 2180

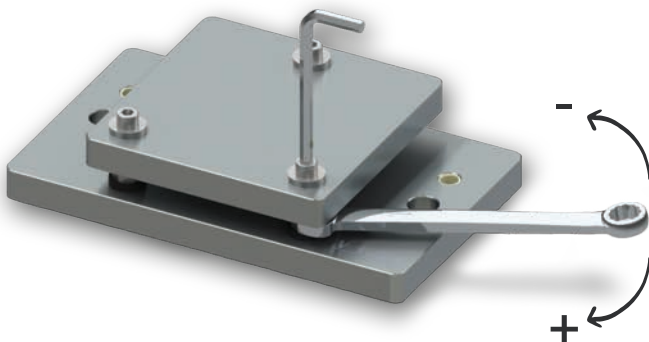
Technische Informationen:

- Montageplatte 180x180 mm
- Positionierung per Stifte Ø8 mm möglich
- Bohrung Ø14 mm (M6-M10)
- Maximale vertikale Belastungskraft 8'000 N
- Geeignet für:
 - TSP/USV750
 - BK 40/60



 Notwendiges Werkzeug zum Einstellen des Parallelitätstisches

Anziehen / entziehen



Inbusschlüssel 5 mm

Gabelschlüssel 13 mm